

专注美好未来

IOG[®] 朗格塑机
LOG MACHINE

高效节能伺服注塑机
High efficiency and energy saving servo injection molding machine



扫一扫 更多产品介绍
SCAN TO UNLOCK MORE PRODUCTS

LOG-SAE-A01

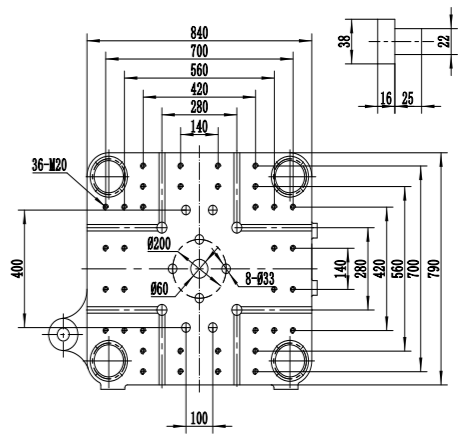
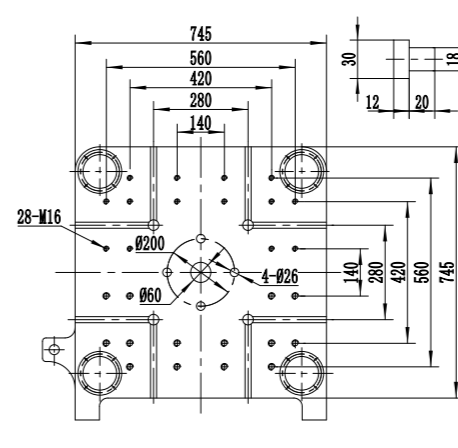
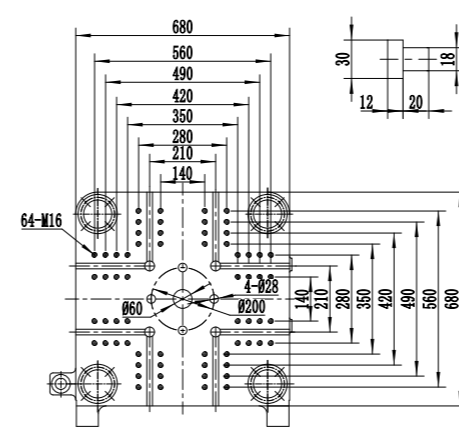
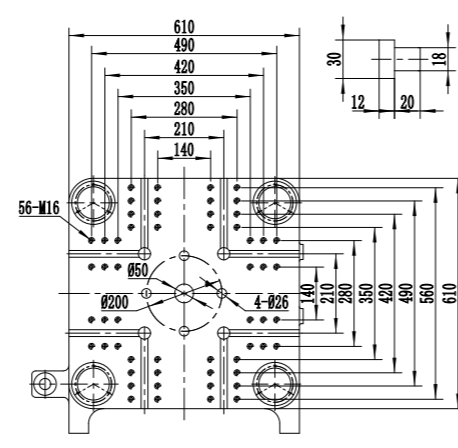
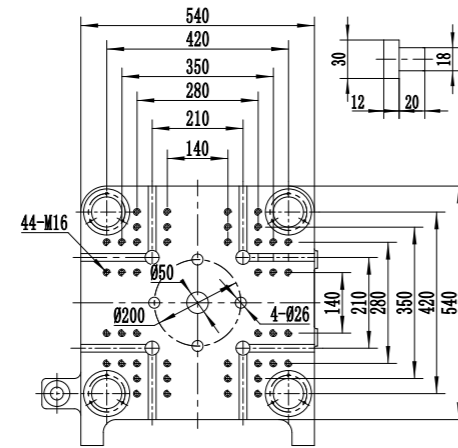
技术参数

TECHNICAL SPECIFICATIONS

DESCRIPTION	单位	LOG-90SAE		LOG-130SAE		LOG-160SAE		LOG-210SAE		LOG-250SAE	
		B	C	B	C	B	C	B	C	B	C
国际公认号	INTERNATIONAL RECOGNIZED MODELS	275/90		416/130		525/160		830/210		1140/250	
射胶系统	INJECTION UNIT										
理论容积	INJECTION VOLUME	154	181	263	302	318	392	470	569	687	863
理论重量 (PET)	SHOT WEIGHT (PET)	164	193	281	323	340	419	502	608	660	922
螺杆直径	SCREW DIAMETER	35	38	42	45	45	50	50	55	58	65
长径比	SCREW L:D RATIO	25	24	25	24	25	24	25	24	25	24
注射压力	INJECTION PRESSURE	185	157	158	138	166	135	176	145	166	132
注射速率	INJECTION RATE	109	127	169	195	197	245	229	278	259	351
注射速度	INJECTION SPEED	110		115		120		110		92	
螺杆行程	SCREW STROKE	160		190		200		240		260	
螺杆转速	SCREW SPEED	170		190		150		150		130	
锁模系统	CLAMPING UNIT										
锁模力	CLAMPING FORCE	900		1300		1600		2100		2500	
开模行程	OPENING STROKE	320		380		430		480		520	
模板尺寸	PLATEN SIZE	540x540		610x610		680x680		745x745		840x790	
连接柱内距	SPACE BETWEEN TIE BARS	360x360		410x410		460x460		510x510		580x530	
容模量	MOLD THICKNESS	150-360		150-430		180-500		200-550		200-580	
模板最大行程	PLATEN MAX STROKE	680		810		930		1030		1100	
油压顶出行程	EJECTOR STROKE	100		120		140		150		150	
油压顶出力	EJECTOR FORCE	34		49		58		77		77	
动力/电热	POWER/ELECTRIC HEATING										
油压系统压力	HYDRAULIC SYSTEM PRESSURE	17.5		17.5		17.5		17.5		17.5	
伺服电机	SERVO MOTOR	15		18.7		23		27.8		36.5	
电热量	HEATING POWER	9.52		11.48		11.74		19.5		22.9	
加热控制区数	HEATING ZONES	3+射嘴		4+射嘴		4+射嘴		4+射嘴		4+射嘴	
其他	OTHER										
油箱容积	OIL TANK CAPACITY	160		200		210		310		350	
外形尺寸	MACHINE DIMENSION	4.3*1.1*1.89		4.78*1.15*1.95		5.1*1.25*2.02		5.6*1.35*2.05		6.3*1.41*2.15	

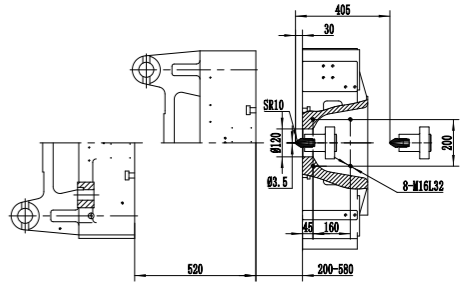
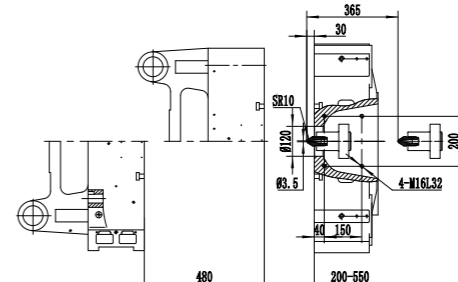
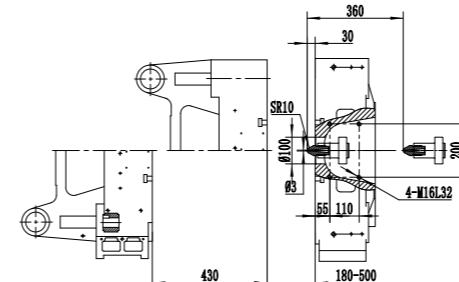
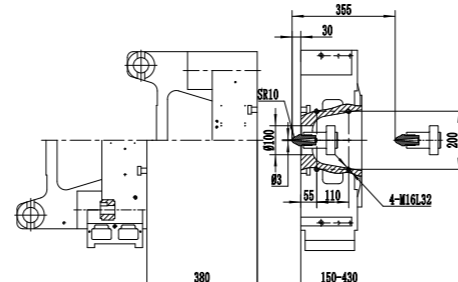
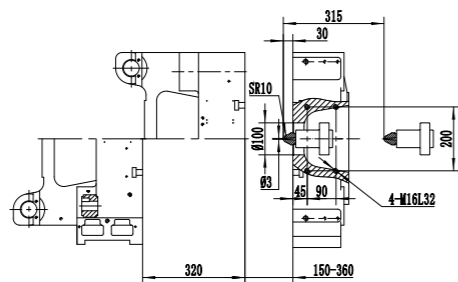
模板正面尺寸 Platen dimensions

Moving platen



模板侧面尺寸 Platen dimensions

Mounting hole for robot/sprue picker top view from fixed platen



机器尺寸

Machine dimension parameters

型号 MODEL	A	B	C	D	E	F
LOG-90SAE	4065	1500	3510	240	1020	1890
LOG-130SAE	4535	1590	3980	250	1100	1950
LOG-160SAE	4845	1720	4245	250	1180	2024
LOG-210SAE	5330	1780	4735	270	1340	2050
LOG-250SAE	5950	1820	5220	350	1400	2140
LOG-320SAE	6260	1870	5460	240	1556	2240
LOG-350SAE	6911	1950	5956	240	1600	2210
LOG-450SAE	7906	1860	6908	240	1750	2250
LOG-500SAE	8550	2070	7420	350	1820	2390

最终解释权归宁波创基机械所有

示意图

Sketch Map

