

专注美好未来

IOG[®] 朗格塑机
LOG MACHINE

High efficiency and energy saving servo injection molding machine

IOG[®] 朗格塑机
LOG MACHINE



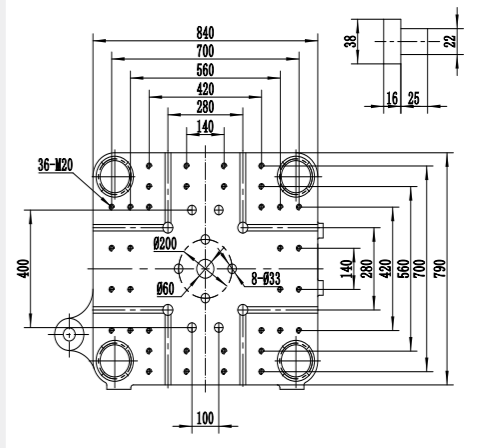
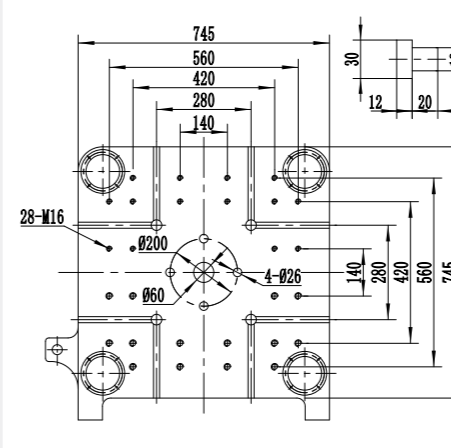
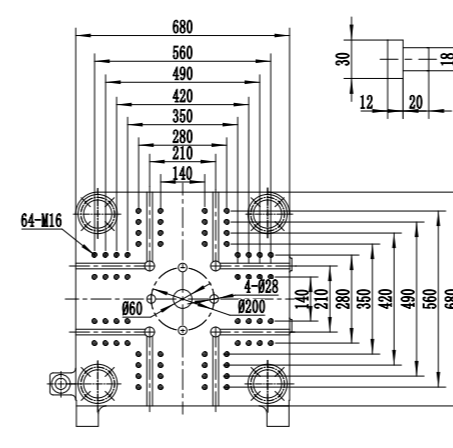
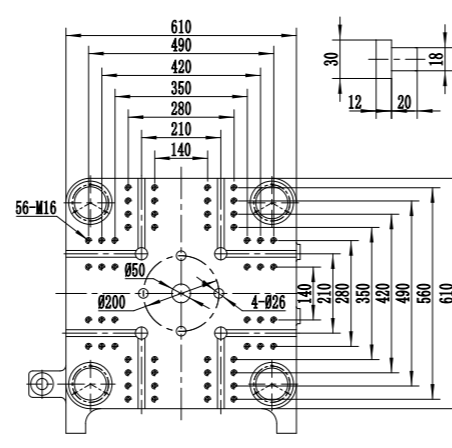
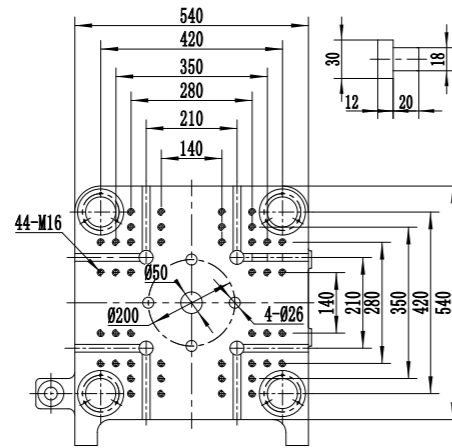
LOG PVC

TECHNICAL SPECIFICATIONS

DESCRIPTION	单位	LOG-90SAE		LOG-130SAE		LOG-160SAE		LOG-210SAE		LOG-250SAE		
		275/90		416/130		525/160		830/210		1140/250		
国际公认号	INTERNATIONAL RECOGNIZED MODELS	A	B	A	B	A	B	A	B	A	B	
射胶系统	INJECTION UNIT											
理论容积	INJECTION VOLUME	113	154	215	263	277	318	381	470	510	617	
理论重量 (PVC)	SHOT WEIGHT(PS)	135	172	258	315	332	381	457	564	612	673	
螺杆直径	SCREW DIAMETER	30	35	38	42	42	45	45	50	50	55	
长径比	SCREW L:D RATIO	22	22	22	21.5	22	21.7	22	21.5	23	23	
注射压力	INJECTION PRESSURE	252	185	193	158	190	166	217	176	224	185	
注射速率	INJECTION RATE	89	114	155	189	192	221	210	257	216	237	
注射速度	INJECTION SPEED		110		115		120		110		92	
螺杆行程	SCREW STROKE		160		190		200		240		260	
螺杆转速	SCREW SPEED		160		160		160		150		110	
锁模系统	CLAMPING UNIT											
锁模力	CLAMPING FORCE		900		1300		1600		2100		2500	
开模行程	OPENING STROKE		320		380		430		480		520	
模板尺寸	PLATEN SIZE		540x540		610x610		680x680		745x745		840x790	
连接柱内距	SPACE BETWEEN TIE BARS		360x360		410x410		460x460		510x510		580x530	
容模量	MOLD THICKNESS		150-360		150-430		180-500		200-550		200-580	
模板最大行程	PLATEN MAX STROKE		680		810		930		1030		1100	
油压顶出行程	EJECTOR STROKE		100		120		140		150		150	
油压顶出力	EJECTOR FORCE		31		42		50		67		67	
动力/电热	POWER/ELECTRIC HEATING											
油压系统压力	HYDRAULIC SYSTEM PRESSURE		17.5		17.5		17.5		17.5		17.5	
伺服电机	SERVO MOTOR		15		18.7		23		27.8		27.8	
电热量	HEATING POWER		7.52		8.48		13.44		14.5		18.4	
加热控制区数	HEATING ZONES		3+射嘴		4+射嘴		4+射嘴		4+射嘴		4+射嘴	
其他	OTHER											
油箱容积	OIL TANK CAPACITY	L	160		200		210		310		350	
外形尺寸	MACHINE DIMENSION	m*m*m	4.2*1.1*1.89		4.58*1.15*1.95		4.83*1.25*2.02		5.4*1.35*2.05		6.13*1.41*2.15	

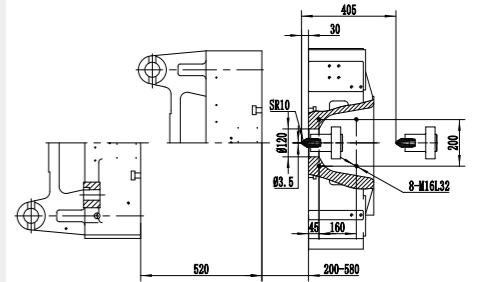
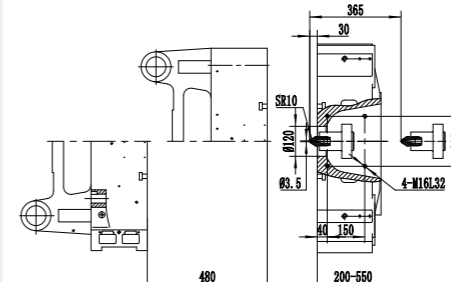
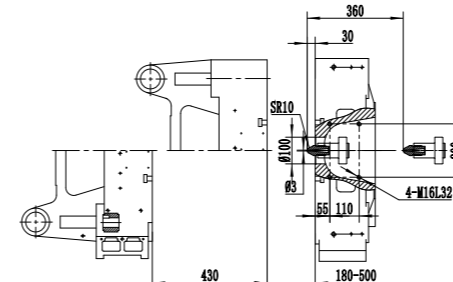
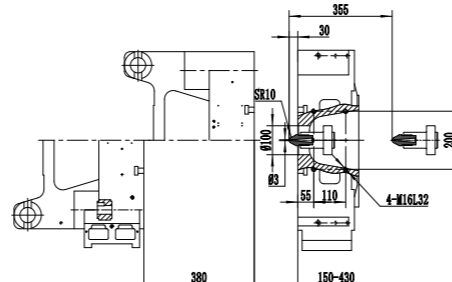
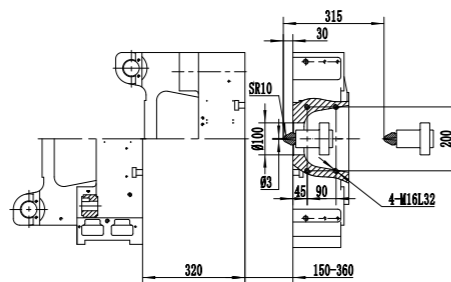
Platen dimensions

Moving platen



Platen dimensions

Mounting hole for robot/sprue picker top view from fixed platen



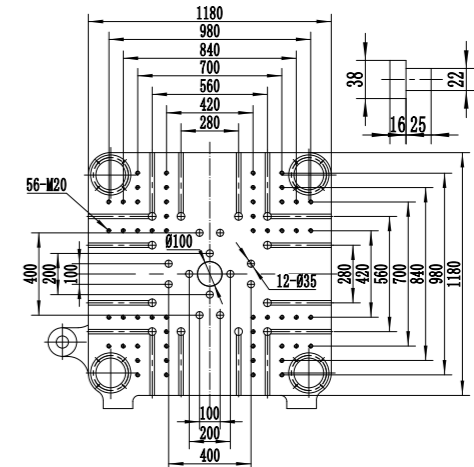
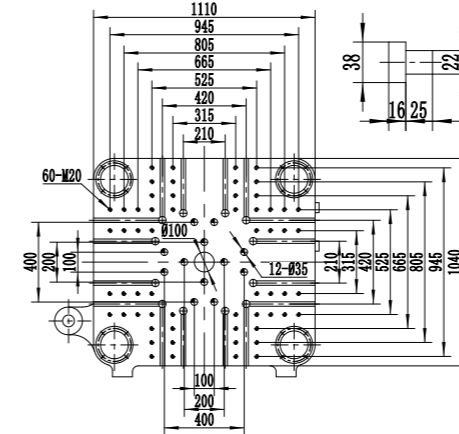
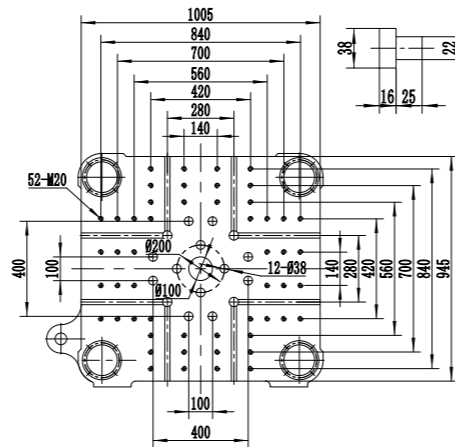
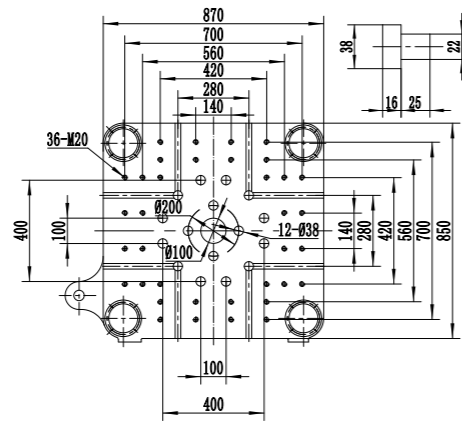
LOG PVC

TECHNICAL SPECIFICATIONS

DESCRIPTION	单位	LOG-320SAE		LOG-350SAE		LOG-450SAE		LOG-500SAE	
		1400/320	1870/350	2860/450	3240/500				
国际公认号	INTERNATIONAL RECOGNIZED MODELS	A	B	A	B	A	B	A	B
射胶系统	INJECTION UNIT								
理论容积	INJECTION VOLUME	712	792	1062	1231	1385	1810	1898	2438
理论重量 (PVC)	SHOT WEIGHT(PS)	854	950	1274	1477	1662	2172	2277	2925
螺杆直径	SCREW DIAMETER	55	58	65	70	70	80	75	85
长径比	SCREW L:D RATIO	23	23	22.6	22.5	23	23.4	23	23.5
注射压力	INJECTION PRESSURE	211	190	207	178	234	179	248	190
注射速率	INJECTION RATE	283	316	366	424	424	554	530	619
注射速度	INJECTION SPEED	100	92	92	92	92	92	100	100
螺杆行程	SCREW STROKE	300	320	360	360	360	360	430	430
螺杆转速	SCREW SPEED	110	110	77	77	77	77	77	77
锁模系统	CLAMPING UNIT								
锁模力	CLAMPING FORCE	3200	3500	4500	4500	4500	4500	5000	5000
开模行程	OPENING STROKE	570	615	710	710	710	710	820	820
模板尺寸	PLATEN SIZE	870x850	1000x945	1100x1040	1100x1040	1100x1040	1100x1040	1180x1180	1180x1180
连接柱内距	SPACE BETWEEN TIE BARS	670x580	710x655	770x705	770x705	770x705	770x705	830x830	830x830
容模量	MOLD THICKNESS	200-600	280-770	280-820	280-820	280-820	280-820	350-920	350-920
模板最大行程	PLATEN MAX STROKE	1170	1385	1530	1530	1530	1530	1740	1740
油压顶出行程	EJECTOR STROKE	160	160	185	185	185	185	210	210
油压顶出力	EJECTOR FORCE	77	77	111	111	111	111	111	111
动力/电热	POWER/ELECTRIC HEATING								
油压系统压力	HYDRAULIC SYSTEM PRESSURE	17.5	17.5	17.5	17.5	17.5	17.5	17.5	17.5
伺服电机	SERVO MOTOR	36.5	50.2	64.6	64.6	64.6	64.6	36.5+36.5	36.5+36.5
电热量	HEATING POWER	25.6	27	38.85	38.85	38.85	38.85	48.6	48.6
加热控制区数	HEATING ZONES	5+射嘴	5+射嘴	4+射嘴	4+射嘴	4+射嘴	4+射嘴	5+射嘴	5+射嘴
其他	OTHER								
油箱容积	OIL TANK CAPACITY	380	500	680	680	680	680	1000	1000
外形尺寸	MACHINE DIMENSION	6.32*1.6*2.24	6.94*1.73*2.21	7.94*1.83*2.25	7.94*1.83*2.25	7.94*1.83*2.25	7.94*1.83*2.25	8.55*1.91*2.39	8.55*1.91*2.39

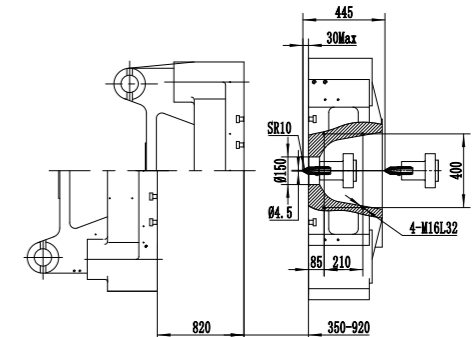
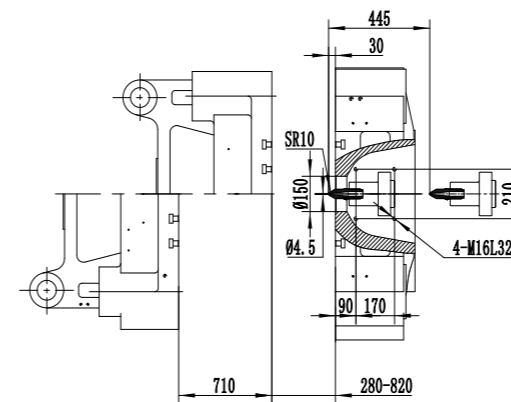
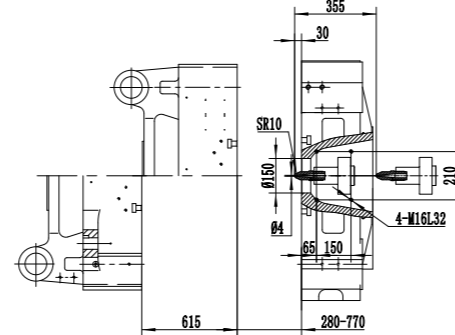
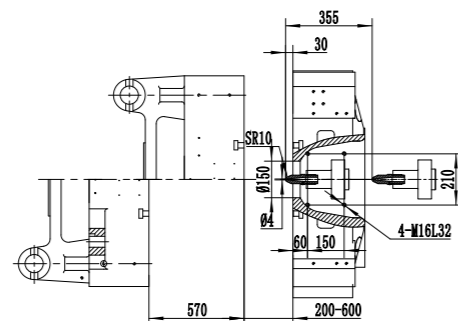
Platen dimensions

Moving platen



Platen dimensions

Mounting hole for robot/sprue picker top view from fixed platen



Machine dimension parameters

型号 MODEL	A	B	C	D	E	F
LOG-90SAE	3965	1500	3410	240	1020	1890
LOG-130SAE	4335	1590	3780	250	1100	1950
LOG-160SAE	4575	1720	3975	250	1180	2024
LOG-210SAE	5130	1780	4535	270	1340	2050
LOG-250SAE	5780	1820	5050	350	1400	2140
LOG-320SAE	6080	1870	5300	240	1556	2240
LOG-350SAE	6705	1950	5750	240	1600	2210
LOG-450SAE	7700	1860	6700	240	1750	2250
LOG-500SAE	8200	2070	7070	350	1820	2390

有

Sketch Map

