

Lead the market segment



NINGBO CHUANGJI MACHINERY CO.,LTD.

ADD : Simen Industrial Area , yuyao , zhejiang Province , China
P.C : 315400
TEL : +86-18395810513
+86-574-62523811
FAX : +86-574-62523806
SERVICE : 400 826 0110



SCAN TO UNLOCK MORE PRODUCTS



S9 SERIES SERVOMOTOR
INJECTION MOLDING MACHINE

PLASTIC INJECTION MOLDING PROJECT RESOLVER

E-mail : nbcj@logge.com.cn
www.logge.com.cn
www.log-machine.com

2023-A



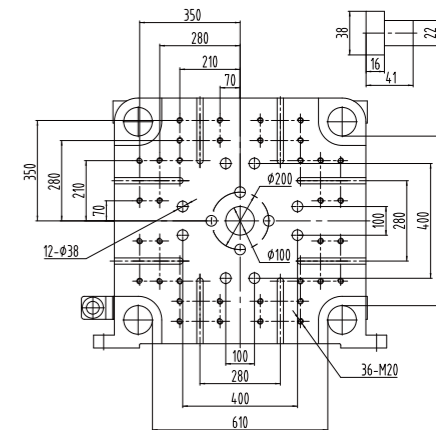
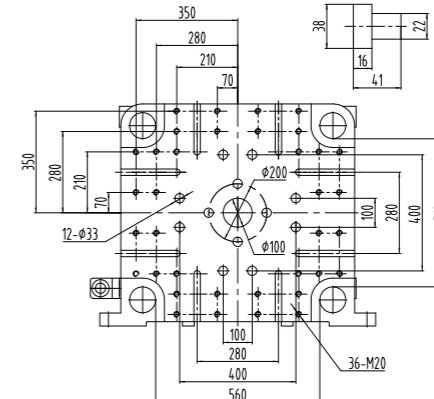
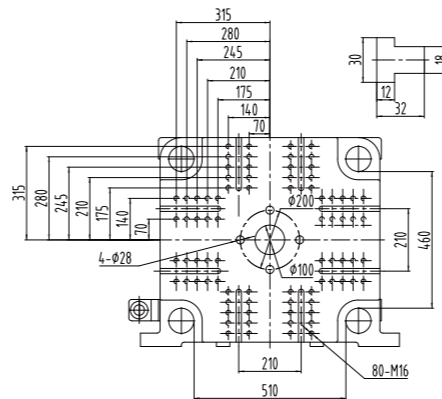
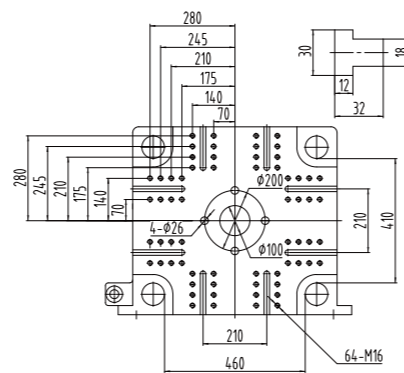
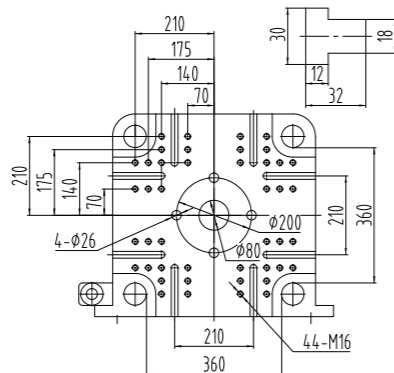
NINGBO CHUANGJI MACHINERY CO.,LTD.

TECHNICAL SPECIFICATIONS

DESCRIPTION		LOG90S9			LOG140S9			LOG170S9			LOG220S9			LOG270S9		
INTERNATIONAL RECOGNIZED MODELS	UNIT	275/90			450/140			560/170			830/220			1180/270		
		A	B	C	A	B	C	A	B	C	A	B	C	A	B	C
INJECTION UNIT																
INJECTION VOLUME	cm ³	113	154	181	215	263	302	277	318	392	381	470	569	510	687	863
SHOT WEIGHT(PS)	g	106	144	170	196	239	274	260	298	368	347	429	520	464	625	785
SCREW DIAMETER	mm	30	35	38	38	42	45	42	45	50	45	50	55	50	58	65
SCREW L:D RATIO		23	20	18	21.4	20	18	21.4	20	18	22	20	18	24	21	18
INJECTION PRESSURE	Mpa	248	182	155	213	174	152	206	180	145	221	179	148	234	174	138
MAX INJECTION RATE	g/s	64	88	104	118	144	166	151	173	215	173	214	259	214	288	362
INJECTION SPEED	mm/s		101			115			120			120			120	
SCREW STROKE	mm		160			190			200			240			260	
SCREW SPEED	r/min		190			210			210			210			210	
CLAMPING UNIT																
CLAMPING FORCE	KN	900			1400			1700			2200			2700		
OPENING STROKE	mm	320			380			430			480			570		
Formwork size	mm	540×540			675×625			755×705			835×780			900×880		
SPACE BETWEEN TIE BARS	mm*mm	360×360			460×410			510×460			560×510			610×590		
MOLD THICKNESS	mm	150-360			180-500			200-550			220-600			220-650		
PLATEN MAX STROKE	mm	680			880			980			1080			1220		
EJECTOR STROKE	mm	100			120			140			150			160		
EJECTOR FORCE	KN	31			42			50			67			77		
POWER/ELECTRIC HEATING																
MAX OIL PRESSURE	Mpa	16			16			16			16			16		
PUMP MOTOR	KW	14			23			28.3			36.7			39		
HEATING POWER	KW	6.5			7.5			12.6			13.1			16		
HEATING ZONES		3+射咀			4+射咀			4+射咀			4+射咀			4+射咀		
OTHER																
OIL TANK VOLUME	L	170			190			220			320			380		
MACHINE DIMENSION	m*m*m	4.3*1.2*1.95			4.6*1.25*2.0			5.1*1.3*2.0			5.4*1.4*2.1			6.4*1.6*2.18		

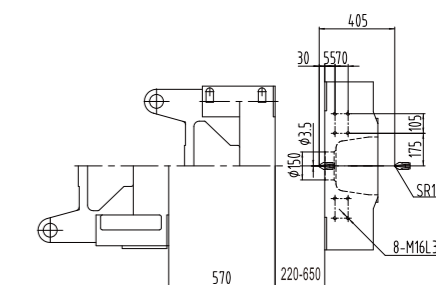
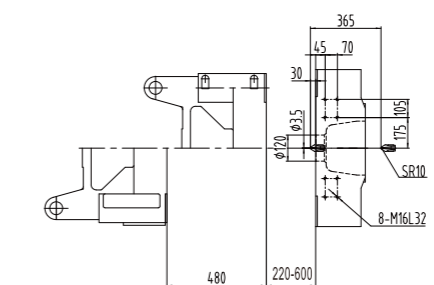
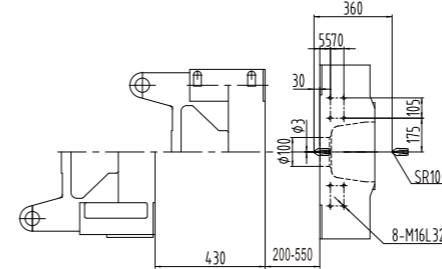
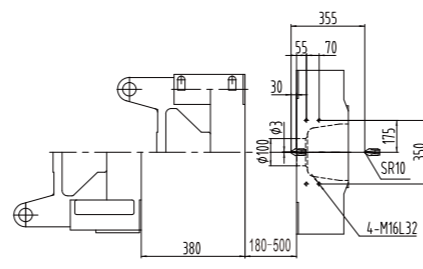
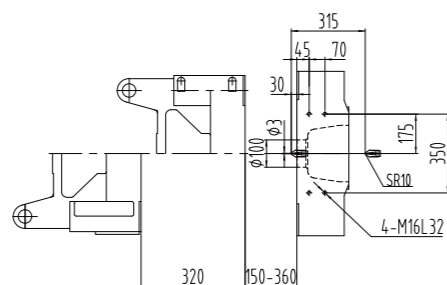
Platen dimensions

Moving platen



Platen dimensions

Mounting hole for robot/sprue picker top view from fixed platen

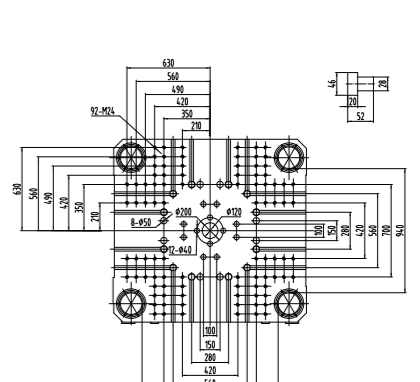
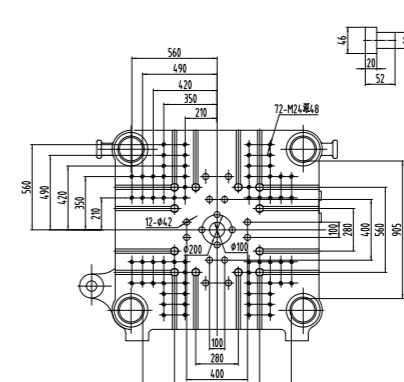
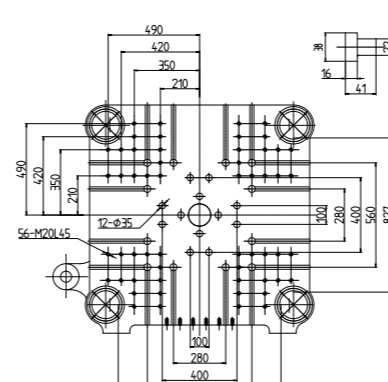
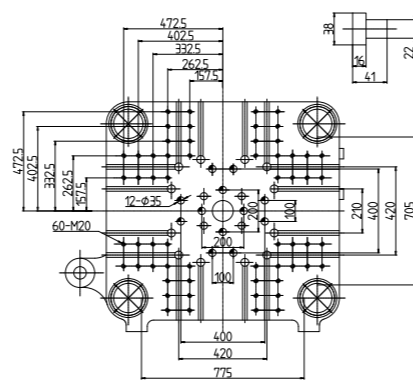
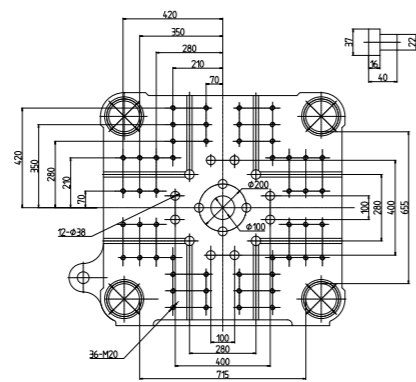


TECHNICAL SPECIFICATIONS

DESCRIPTION	LOG320S9				LOG400S9				LOG530S9				LOG650S9			LOG800S9		
	1900/320				2860/400				3560/530				5000/650			5800/800		
INTERNATIONAL RECOGNIZED MODELS	A	B	C	D	A	B	C	D	A	B	C	D	A	B	C	A	B	C
INJECTION UNIT	760	1062	1231	1414	1193	1385	1810	2290	1384	1590	2042	2550	2160	2734	3376	2558	3195	3903
INJECTION VOLUME	691	966	1120	1286	1086	1260	1646	2084	1260	1494	1919	2397	1966	2488	3702	2327	2907	3552
SHOT WEIGHT(PS)	55	65	70	75	65	70	80	90	70	75	85	95	80	90	100	85	95	105
SCREW DIAMETER	23	22.6	21	19.6	23	24	21	19	23	23.8	21	18.7	23.6	21	19	24.5	22	20
SCREW L:D RATIO	263	189	163	142	248	214	163	129	257	224	174	139	237	187	151	228	182	149
INJECTION PRESSURE	262	330	385	442	310	360	470	595	352	405	520	650	457	635	785	567	709	866
MAX INJECTION RATE		110				110				112				100			110	
INJECTION SPEED		320				360				360				430			450	
SCREW STROKE		180				160				160				150			150	
SCREW SPEED																		
CLAMPING UNIT		3200				4000				5300				6500			8000	
CLAMPING FORCE		615				710				850				920			1000	
OPENING STROKE		1050 x 990				1130 x 1060				1250 x 1220				1320 x 1290			1450 x 1385	
Formwork size		710 x 655				770 x 705				870 x 825				970 x 900			1030 x 940	
SPACE BETWEEN TIE BARS		280-770				280-820				350-920				380-1010			450-1050	
MOLD THICKNESS		1385				1530				1770				1930			2050	
PLATEN MAX STROKE		160				185				210				265			300	
EJECTOR STROKE		77				111				111				182			200	
EJECTOR FORCE																		
POWER/ELECTRIC HEATING		16				16				16				16			16	
MAX OIL PRESSURE		56				36.7+36.7				45.2+45.2				45.2+45.2			56+56	
PUMP MOTOR		27				38.85				48.4				53.2			65	
HEATING POWER		5+射咀				5+射咀				5+射咀				6+射咀			6+射咀	
HEATING ZONES																		
OTHER		500				680				900				1300			1500	
OIL TANK VOLUME	L	7.4*1.63*2.35				8.6*1.95*2.35				9.2*1.95*2.41				9.6*1.9*2.3			10.6*2.6*2.7	
MACHINE DIMENSION	m*m*m																	

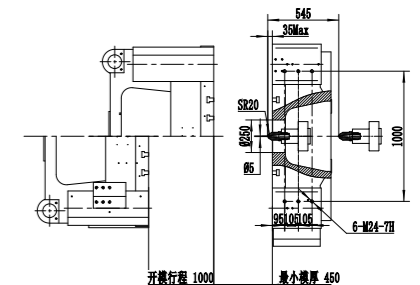
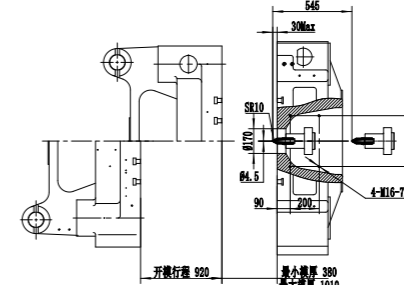
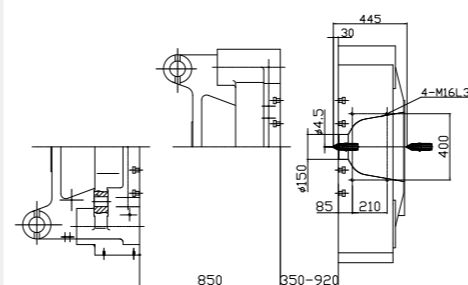
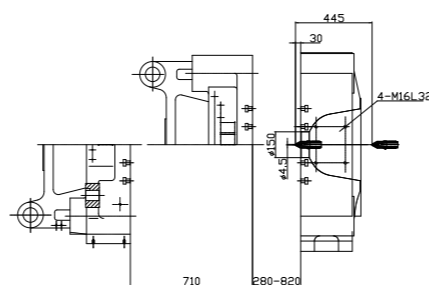
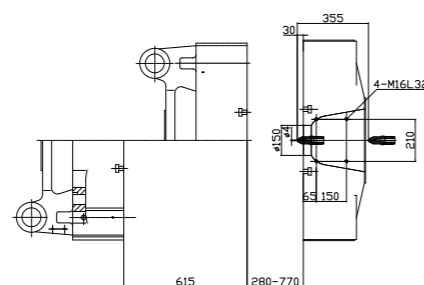
Platen dimensions

Moving platen



Platen dimensions

Mounting hole for robot/sprue picker top view from fixed platen

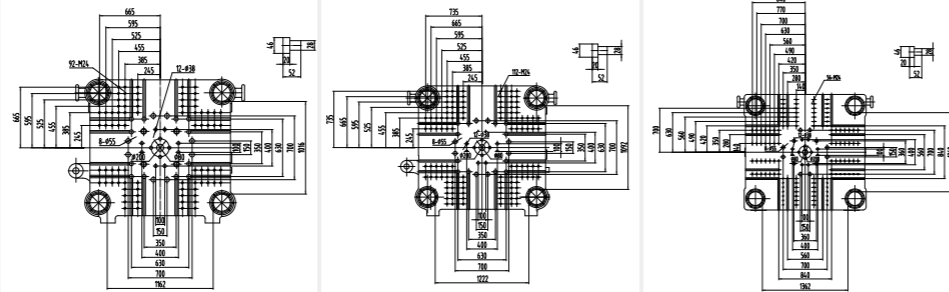


TECHNICAL SPECIFICATIONS

DESCRIPTION	UNIT	LOG1000S9				LOG1200S9				LOG1400S9			
		7030/1000				9080/1200				10900/1400			
INTERNATIONAL RECOGNIZED MODELS		A	B	C	D	A	B	C	D	A	B	C	D
INJECTION UNIT													
INJECTION VOLUME	cm ³	3179	3825	4750	5652	4123	4989	5938	6968	5465	6503	7632	8851
SHOT WEIGHT(PS)		2893	3571	4321	5143	3751	4540	5403	6340	4972	5918	6954	8054
SCREW DIAMETER	mm	90	100	110	120	100	110	120	130	110	120	130	140
SCREW L:D RATIO		24.4	22	20	18.3	24.2	22	20.2	18.6	26.2	24	22.2	20.6
INJECTION PRESSURE	Mpa	227	184	152	128	220	182	153	130	200	168	143	123
MAX INJECTION RATE		684	857	1037	1234	750	907	1080	1276	1037	1234	1448	1680
INJECTION SPEED	mm/s		120				105				125		
SCREW STROKE			500				525				575		
SCREW SPEED	r/min		150				125				100		
CLAMPING UNIT													
CLAMPING FORCE	KN		10000				12000				14000		
OPENING STROKE			1050				1150				1300		
Formwork size	mm		1540 x 1530				1650 x 1650				1900 x 1870		
SPACE BETWEEN TIE BARS	mm*mm		1160 x 1010				1220 x 1090				1360 x 1260		
MOLD THICKNESS	mm		500-1200				500-1250				550-1300		
PLATEN MAX STROKE	mm		2250				2400				2600		
EJECTOR STROKE	mm		300				350				350		
EJECTOR FORCE	KN		260				260				260		
POWER/ELECTRIC HEATING													
MAX OIL PRESSURE	Mpa		16				16				16		
PUMP MOTOR	KW		56+73.4				56+73.4				56+56+56		
HEATING POWER	KW		65				75				92		
HEATING ZONES			6+射咀				6+射咀				6+射咀		
OTHER													
OIL TANK VOLUME	L		1900				2300				2600		
MACHINE DIMENSION	m*m*m		11*2.4*3.1				12.5*2.8*3.5				13.4*3.2*4.7		

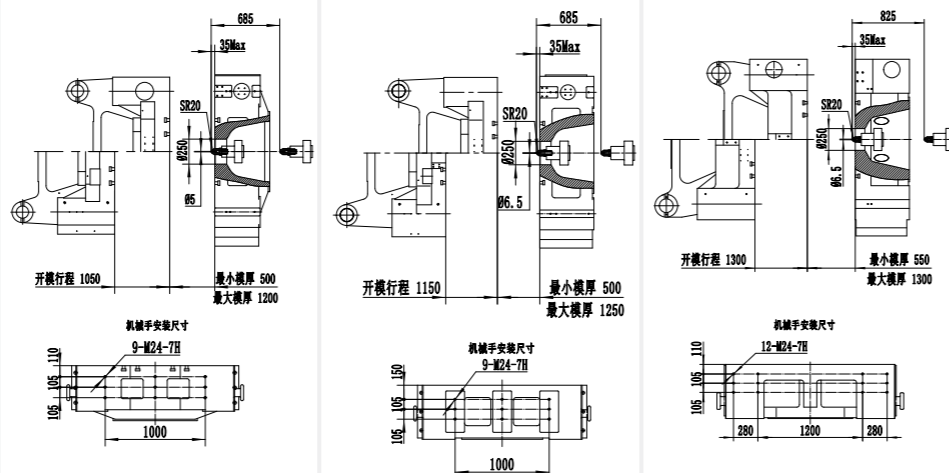
Platen dimensions

Moving platen



Platen dimensions

Mounting hole for robot/sprue picker view from fixed platen



Machine dimension parameters

型号	A	B	C	D	E	F	G	H
LOG90-S9	1540	4170	4270	1940	1030	355	520	270
LOG140-S9	1660	4546	4646	1990	1180	435	580	315
LOG170-S9	1734	4915	5015	2085	1260	451	620	355
LOG220-S9	1800	5390	5490	2110	1400	480	690	390
LOG270-S9	2000	6210	6310	2200	1504	600	740	445
LOG320-S9	2051	7006	7366	2336	1797	620	800	500
LOG400-S9	1960	7725	8070	2427	1993	615	880	535
LOG530-S9	2010	8249	8599	2387	1908	670	915	610
LOG650-S9	2180	9300	9600	2250	1880	730	790	685
LOG800-S9	2270	10200	10600	2900	2300	770	1075	710
LOG1000-S9	2385	10700	11000	3100	2400	830	1120	770
LOG1200-S9	2880	12000	12500	3500	2800	870	1175	830
LOG1400-S9	2800	12800	13500	4500	2900	965	1305	920

Sketch Map

